

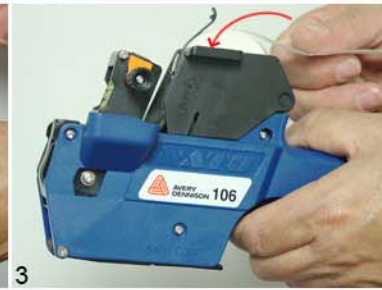
Label Loading and Ink Roller Changing Guide - Model 106 Hand Labeler



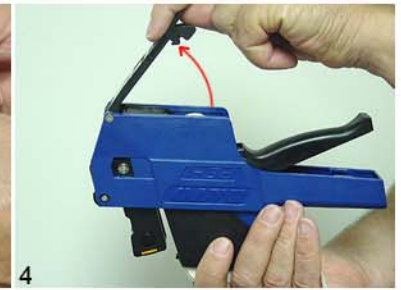
1 Open label loading gate



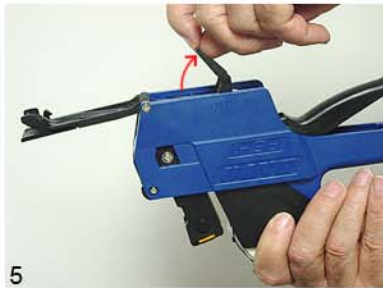
2 Insert roll on label roll holder



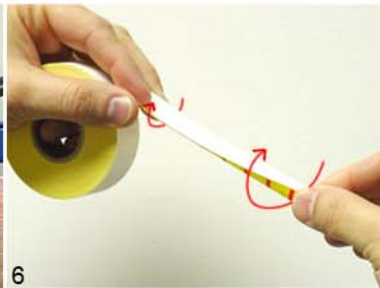
3 Close label loading gate



4 Open bottom cover



5 Lift to open platen



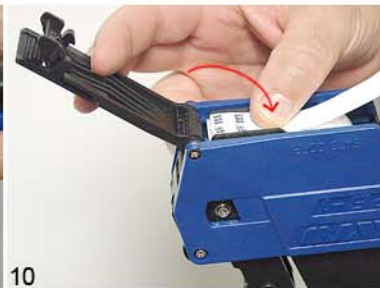
6 Straighten label roll for ease of loading



7 Feed the label strip through the body



9 To close, press the platen; while pressing, pull label strip until it "clicks" & does not advance



10 Squeeze handle couple of times while keeping platen pressed down & then fold back the label strip towards handle



11 Close the bottom cover

Loading labels



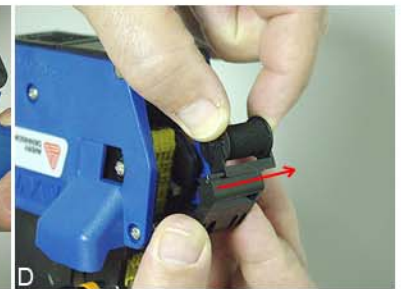
A Squeeze the handle



B Gently pull the ink roller holder



C Slide the ink roller from the holder



E Slide new ink roller onto the holder & release ink roller holder

Changing ink roller



Fastener Division
224 Industrial Road
Fitchburg, MA 01420-4604

Tel - 1-800-225-5913; Fax - 1-800-848-2169; Web - www.fastener.averydennison.com

Lit.No.33036/605